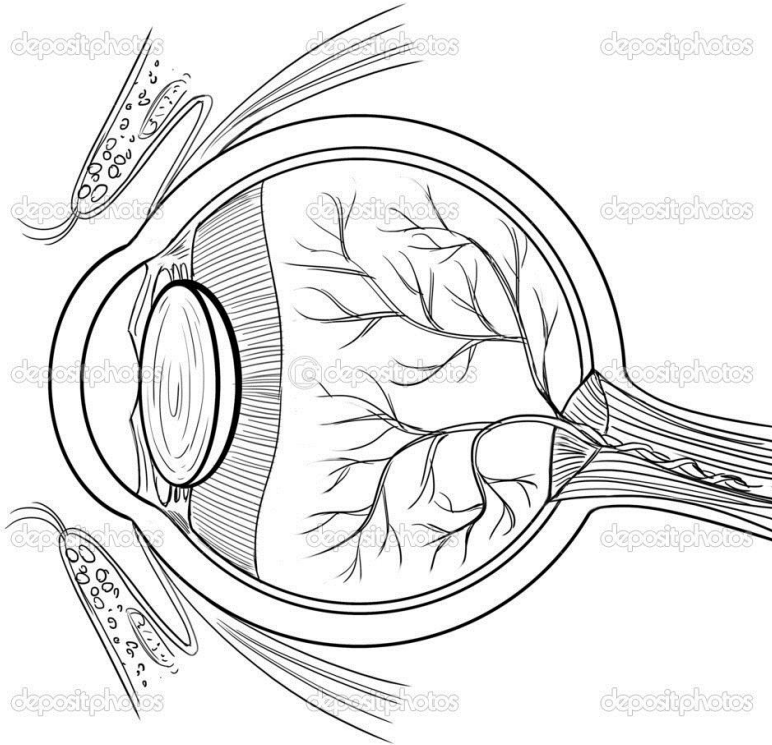


# Refraction of light POONAM LATA GADAV

## Practice Assignment-1

1. Define refraction of light.
2. Label the various parts of human eye



3. Draw diagrams to show the path of ray of light when it goes from-
  - a) Air to glass.
  - b) Water to air.
  - c) Glass to water.
4. Define Lateral displacement in case of glass slab.
5. What is a lens? What are the two kinds of lenses?
6. What are the uses of lenses?
7. What are the two possible ways in which a convex lens can produce magnified image of a given object? What is the difference, if any between these two images?

8. Which one of the following materials cannot be used to make lens?

a) Water

c) plastic

b) Glass

d)Clay

9. What is the use of a stylus?

10. What is a braille system?

11. Define blind spot?

12. Name few natural phenomena's where refraction can take place.